

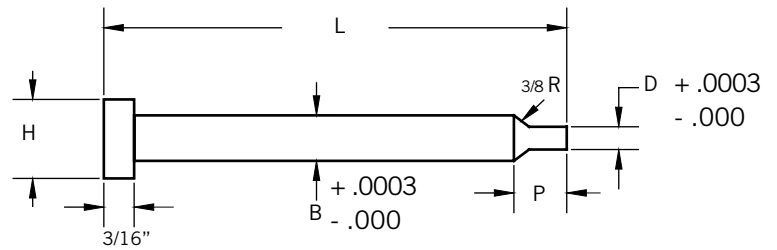
# HIGH SPEED STEEL PUNCHES

Parker Ejector Pins are manufactured from the finest quality AISI type M-2 high speed steel, heat treated and tempered to Rockwell C 60-62, then precision ground to uniform close tolerance.



WHEN ORDERING, SPECIFY STYLE, DIA. AND LENGTH (SA 062 1.5)  
STANDARD STOCK LENGTHS 1 1/2" - 2" - 2 1/2"

Dia. "D" Increment of .001	H
.031 - .040	Dia. "D" + .050
.041 - .059	
.060 - .075	
.076 - .090	
.091 - .099	
.100 - .109	
.110 - .125	
.126 - .141	Dia. "D" + 1/16"
.142 - .156	
.157 - .172	
.173 - .188	
.189 - .203	
.204 - .219	
.220 - .234	
.235 - .250	
.251 - .266	
.267 - .281	
.282 - .297	
.298 - .313	
.314 - .344	
.345 - .359	
.360 - .375	
.376 - .421	
.422 - .437	
.438 - .500	
.510 - .562	
.563 - .625	
.626 - 1.00	



D	B	P	H
.031 to .0805	.126	T O S P E C I F I C A T I O N S	3/16"
.081 to .128	.1885		1/4"
.1285 to .1875	.251		5/16"
.188 to .2505	.3135		3/8"
.188 to .2505	.376		7/16"
.251 to .3135	.376		7/16"
.314 to .3755	.501		9/16"
.376 to .500	.5635		5/8"