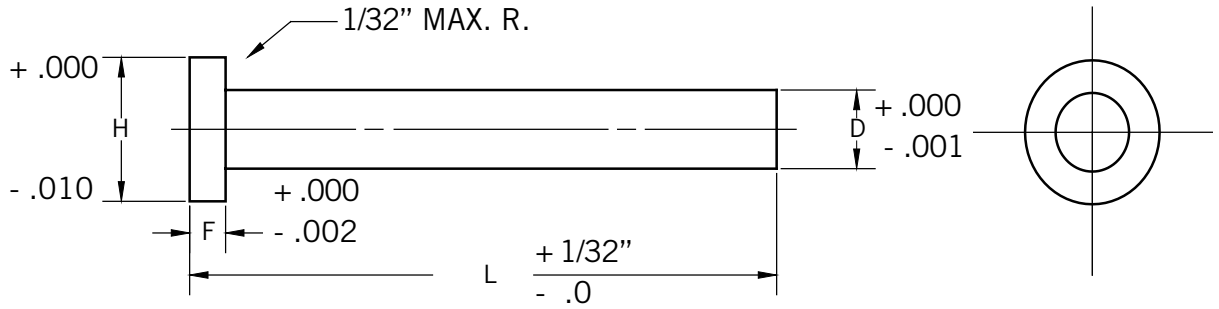


# Nitrided Ejector Pins

Parker Ejector Pins are made from the best air hardening hot work die steel and heat treated for a tough core. The head is solid forged and annealed to prevent breakage. The body of the pin is nitrided to give a surface hardness of 64-74 Rockwell "C", then honed for a smooth friction free surface.



## STANDARD EJECTOR PINS

Cat. No.	D Pin Dia.	H Head Dia	F Head Thick.
EJ 046	3/64	1/4	1/8
EJ 062	1/16	1/4	1/8
EJ 078	5/64	1/4	1/8
EJ 093	3/32	1/4	1/8
EJ 109	7/64	1/4	1/8
EJ 125	1/8	1/4	1/8
EJ 140	9/64	1/4	1/8
EJ 156	5/32	9/32	5/32
EJ 171	11/64	11/32	3/16
EJ 187	3/16	3/8	3/16
EJ 203	13/64	3/8	3/16
EJ 218	7/32	13/32	3/16
EJ 234	15/64	13/32	3/16
EJ 250	1/4	7/16	3/16
EJ 265	17/64	7/16	1/4
EJ 281	9/32	7/16	1/4
EJ 296	19/64	1/2	1/4
EJ 312	5/16	1/2	1/4
EJ 328	21/64	9/16	1/4
EJ 343	11/32	9/16	1/4
EJ 359	23/64	5/8	1/4
EJ 375	3/8	5/8	1/4
EJ 406	13/32	11/16	1/4
EJ 437	7/16	11/16	1/4
EJ 468	15/32	3/4	1/4
EJ 500	1/2	3/4	1/4
EJ 562	9/16	13/16	1/4
EJ 625	5/8	7/8	1/4
EJ 687	11/16	15/16	1/4
EJ 750	3/4	1"	1/4
EJ 875	7/8	1-1/8"	1/4
EJ 1000	1"	1-1/4"	1/4

Note: Standard Lengths: 3", 6", 10"

## .005 OVERSIZE EJECTOR PINS

Cat. No.	.005 Over Std. Dia.	H Head Dia	F Head Thick.
EJ 051	3/64	1/4	1/8
EJ 067	1/16	1/4	1/8
EJ 083	5/64	1/4	1/8
EJ 098	3/32	1/4	1/8
EJ 114	7/64	1/4	1/8
EJ 130	1/8	1/4	1/8
EJ 145	9/64	1/4	1/8
EJ 161	5/32	9/32	5/32
EJ 176	11/64	11/32	3/16
EJ 192	3/16	3/8	3/16
EJ 208	13/64	3/8	3/16
EJ 223	7/32	13/32	3/16
EJ 239	15/64	13/32	3/16
EJ 255	1/4	7/16	3/16
EJ 270	17/64	7/16	1/4
EJ 286	9/32	7/16	1/4
EJ 301	19/64	1/2	1/4
EJ 317	5/16	1/2	1/4
EJ 333	21/64	9/16	1/4
EJ 348	11/32	9/16	1/4
EJ 364	23/64	5/8	1/4
EJ 380	3/8	5/8	1/4
EJ 411	13/32	11/16	1/4
EJ 442	7/16	11/16	1/4
EJ 473	15/32	3/4	1/4
EJ 505	1/2	3/4	1/4

Note: Standard Lengths: 3", 6", 10"



Parker Precision Products

The First Name in Quality Metal Punches  
Phone: 800-526-1378 www.parkerprecisionproducts.com