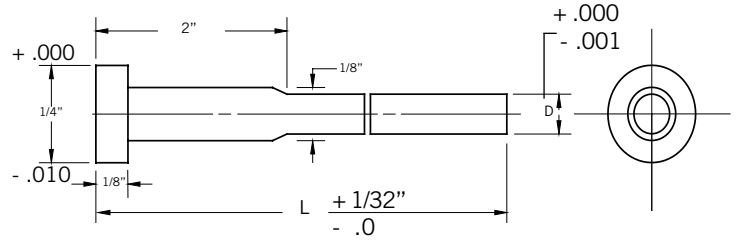
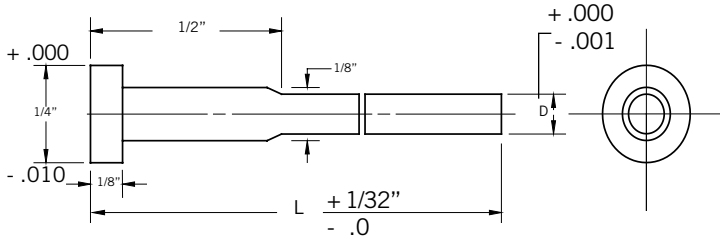


NITRIDED EJECTOR PINS

Shoulder Type

Parker Ejector Pins are made from the best air hardening hot work die steel and heat treated for a tough core. The head is solid forged and annealed to prevent breakage. The body of the pin is nitrided to give a surface hardness of 64-74 Rockwell "C", then honed for a smooth friction free surface.



1/2" Shoulder Pins

Cat. No.	D Pin Dia.
EPS 5-046	3/64
EPS 5-051	3/64 O.S. *
EPS 5-062	1/16
EPS 5-067	1/16 O.S. *
EPS 5-078	5/64"
EPS 5-083	5/64 O.S. *
EPS 5-093	3/32
EPS 5-098	3/32 O.S. *
EPS 5-109	7/64
EPS 5-114	7/64 O.S. *

Note: Standard Lengths: 6", 10", 14"

2" Shoulder Pins

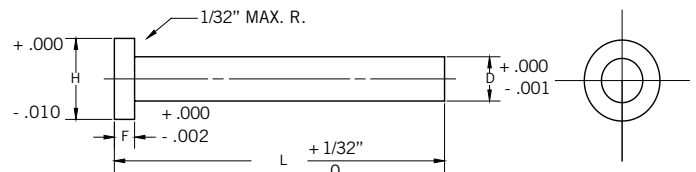
Cat. No.	D Pin Dia.
EPS 2-046	3/64
EPS 2-051	3/64 O.S. *
EPS 2-062	1/16
EPS 2-067	1/16 O.S. *
EPS 2-078	5/64"
EPS 2-083	5/64 O.S. *
EPS 2-093	3/32
EPS 2-098	3/32 O.S. *
EPS 2-109	7/64
EPS 2-114	7/64 O.S. *

Note: Standard Lengths: 6", 10", 14"

*Pin Diameter is .005 over standard diameter
WHEN ORDERING, SPECIFY CAT NO. AND LENGTH (CS 093 3)

STANDARD RETURN PINS

Parker Standard Return Pins are made of the finest grade of Nitralloy Steel. The heads are hot-forged for strength. The outside surface is nitrided to a hardness of 64-74 Rockwell "C".



Cat. No.	D Pin Dia.	H Head Dia.	F Head Thick.
RP 500	1/2	3/4	1/4
RP 625	5/8	7/8	1/4
RP 750	3/4	1	1/4



Parker Precision Products

The First Name in Quality Metal Punches
Phone: 800-526-1378 www.parkerprecisionproducts.com