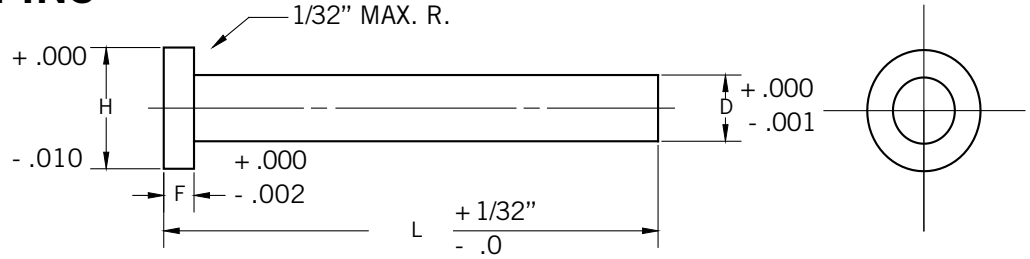


STANDARD CORE PINS



TYPE CS

Made from the finest air hardening hot work die steel heat treated to a hardness of 30-35 Rockwell "C". Precision ground after heat treating. Heads are forged and annealed to permit easier machining.

HIGH HARDNESS TYPE CH

Made from the finest air hardening hot die steel heat treated to a hardness of 50-54 Rockwell "C". Precision ground after heating. Heads are forged and annealed to permit easier machining.

Cat. No.	D Pin Dia.	H Head Dia	F Head Thick.
CS 093	3/32	1/4	1/8
CS 109	7/64	1/4	1/8
CS 125	1/8	1/4	1/8
CS 140	9/64	1/4	1/8
CS 156	5/32	9/32	5/32
CS 171	11/64	11/32	3/16
CS 187	3/16	3/8	3/16
CS 203	13/64	3/8	3/16
CS 218	7/32	13/32	3/16
CS 234	15/64	13/32	3/16
CS 250	1/4	7/16	3/16
CS 265	17/64	7/16	1/4
CS 281	9/32	7/16	1/4
CS 296	19/64	1/2	1/4
CS 312	5/16	1/2	1/4
CS 328	21/64	9/16	1/4
CS 343	11/32	9/16	1/4
CS 359	23/64	5/8	1/4
CS 375	3/8	5/8	1/4
CS 406	13/32	11/16	1/4
CS 437	7/16	11/16	1/4
CS 468	15/32	3/4	1/4
CS 500	1/2	3/4	1/4
CS 562	9/16	13/16	1/4
CS 625	5/8	7/8	1/4
CS 750	3/4	1"	1/4

Note: Standard Lengths: 3", 6", 10"

Cat. No.	D Pin Dia.	H Head Dia	F Head Thick.
CS 093	3/32	1/4	1/8
CS 109	7/64	1/4	1/8
CS 125	1/8	1/4	1/8
CS 140	9/64	1/4	1/8
CS 156	5/32	9/32	5/32
CS 171	11/64	11/32	3/16
CS 187	3/16	3/8	3/16
CS 203	13/64	3/8	3/16
CS 218	7/32	13/32	3/16
CS 234	15/64	13/32	3/16
CS 250	1/4	7/16	3/16
CS 265	17/64	7/16	1/4
CS 281	9/32	7/16	1/4
CS 296	19/64	1/2	1/4
CS 312	5/16	1/2	1/4
CS 328	21/64	9/16	1/4
CS 343	11/32	9/16	1/4
CS 359	23/64	5/8	1/4
CS 375	3/8	5/8	1/4
CS 406	13/32	11/16	1/4
CS 437	7/16	11/16	1/4
CS 468	15/32	3/4	1/4
CS 500	1/2	3/4	1/4
CS 562	9/16	13/16	1/4
CS 625	5/8	7/8	1/4
CS 750	3/4	1"	1/4

Note: Standard Lengths: 3", 6", 10"

WHEN ORDERING, SPECIFY CAT NO. AND LENGTH (CS 093 3)